



LIVING OUR VALUES
INNOVATIVE

DARING

RESPECTFUL

OPEN
BR/2020/04 TOGETHER FOR WHAT MATTERS



RECRUITMENT PACK



CONTENTS

- 4 ABOUT ROYAL HOLLOWAY
- 5 OUR HISTORY
- 7 ROYAL HOLLOWAY IN NUMBERS
- 9 RH2030S: OUR UNIVERSITY STRATEGY
- 11 HOW TO APPLY







ABOUT ROYAL HOLLOWAY

OUR HISTORY

Today's Royal Holloway is formed from two colleges, founded by two social pioneers, Elizabeth Jesser Reid and Thomas Holloway. They were among the first places in Britain where women could access higher education. We have gone from strength to strength and are now proud to offer inclusive education and research to over 12,000 students across our two sites in Surrey and central London.



Elizabeth Jesser Reid



Thomas Holloway



Jane Holloway

Original colleges founded by social pioneers, Elizabeth Jesser Reid and Thomas and Jane Holloway.

• **1800s**

• **1886**

• Royal Holloway's iconic Founder's Building was opened by Queen Victoria, allowing the use of 'Royal' in our title.

• **1900**

We joined the University of London.



Queen Victoria



History shows that we have been brave from the very beginning. Royal Holloway and Bedford Colleges established an environment that was enabling for those who dared to step beyond what society laid out for them.

Professor Julie Sanders,
Vice-Chancellor and Principal

Both colleges became fully co-educational.

1965



Emily Wilding Davison building in Egham is opened by Her Royal Highness, The Princess Royal, Chancellor of the University of London.

1985

Bedford College and Royal Holloway merged.



2017



2024

We celebrate the 175th anniversary of the founding of Bedford College.



ROYAL HOLLOWAY IN NUMBERS

Royal Holloway, University of London, is in the top 35 of all UK universities*. We were founded in the 19th century to provide equity in opportunity, to transform lives through education and create positive change – doing this with bravery, curiosity and care. We have the courage and conviction to think differently, providing a platform to challenge conventions.

With combined and integrated strengths in innovative education and transformative research, we have a passion to create, teach and share knowledge in both established and emerging areas. Through our impactful research, we seek creative solutions to complex challenges to make a real difference in the world. We are a place for growth. We aim to empower individuals and transform lives through inclusive education, an active, and close-knit community, and partnerships that link us with local and global industry and culture.

We are a University of Social Purpose, creating positive change, for what matters – for our students, for society and for the world.



TOP 25%

of all UK research in Research Excellence Framework (REF) 2021



**15TH
IN THE UK**

for the overall quality of our research outputs - Times Higher Education's (THE) analysis and rankings of the REF 2021 results (May 2022)



32ND

The Times and Sunday Times
Good University Guide 2026



41ST

(UK), top 500 (world) - Times Higher Education (THE) World University Rankings 2025



**41ST
IN THE UK**

in the category of 'International Outlook', Times Higher Education (THE) World University Rankings 2026 recognising our broader outlook as a global university



12,699

Students*

1,766

International students

11,260

Undergraduate students

902

Postgraduate taught students

537

Postgraduate research students



79%

of recent graduates in graduate level employment or study**



115,917

alumni of Bedford College, Royal Holloway College and Royal Holloway, University of London and Bedford New College worldwide



2

CAMPUSES

Surrey and Central London



**CONTRIBUTES
£657.1M**

to the UK economy***

* Correct as of December 2025.

** The Guardian University Guide, 2026.

*** Biggar Economics, 2019/2020.

RH2030s: OUR UNIVERSITY STRATEGY

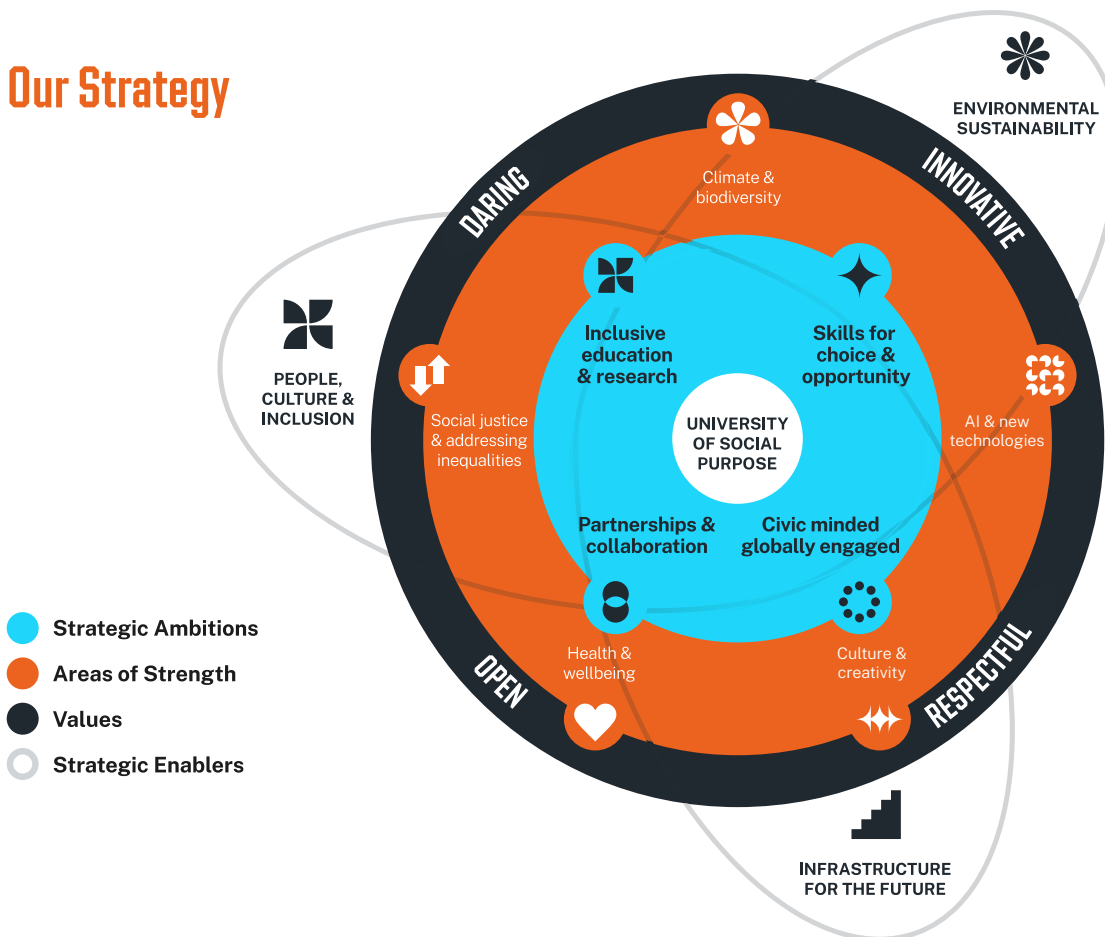
RH2030s outlines our ambitions reaching into the next decade and how we will respond to global needs and challenges, building on the incredible platform of outstanding research, education, and civic and global engagement that is already taking place at Royal Holloway and in the context of an ever-changing world.

Royal Holloway has a proud history of being at the forefront of social change, equality, and inclusion. Our RH2030s strategy aims to carry this ethos

forward with energy and ambition, helping us take advantage of emerging opportunities to make an ever-greater positive impact on the individuals and the communities we serve.

Our vision is to be a forward-thinking University of Social Purpose: one that is committed to enabling outstanding educational and student experience; research and innovation; and local and global engagement with partners to drive social change for a better, more inclusive future.

Our Strategy



Our Values

We are a values-led organisation, with a clear sense of who we are and what we stand for. Our values guide us in being a University of Social Purpose in all we do.

Respectful: An inclusive community built on kindness, trust and understanding.

Innovative: Relentlessly curious and ambitious.

Daring: Challenging ourselves and others to make a positive difference in the world.

Open: Working collaboratively with integrity, honesty, and transparency.

Our Strategic Ambitions

Inclusive Education and Research

We will be a research-intensive University that fosters ambition and innovation. We will provide our students and colleagues with exceptional opportunities to grow and lead, tackling global challenges through inclusive education and socially impactful research, and developing inclusive leaders for the future.

Skills for Choice and Opportunity

We will provide tailored learning experiences that combine research and practical knowledge, fostering a supportive community where students and colleagues develop skills, confidence, and values to shape their futures and positively impact the world.

Civic Minded, Globally Engaged

We will celebrate and build on our global community by connecting with our international alumni, and global and local partners across industry and other sectors. Our University will contribute to economic and societal wellbeing through world-leading research and by supporting and enabling our global student community.

Partnerships and Collaboration

We will develop future-facing, inclusive partnerships that enhance our social purpose. We will utilise our global reach and our status as a University of London federation member to tackle societal challenges and improve the quality, scale, and relevance of opportunities for all those we work with.

Our Areas of Strength

As a University of Social Purpose, we have identified five areas of interdisciplinary strength which thread through our work, from the skills that our graduates will be able to demonstrate to the world to the challenge-led research and impact we undertake with partners, locally and globally.

Our Strategic Enablers

Our strategic enablers are the three core inputs that will contribute to the successful delivery of the RH2030s strategy. They will be embedded throughout our strategic ambitions and everyday activities.

Infrastructure for the Future

We will provide adaptable, high-quality learning and research spaces, both physical and virtual, fostering a sustainable and inclusive environment. We will enable seamless, user-centred digital experiences and an environmentally sustainable infrastructure to support net zero targets and remove outdated spaces and technology.

Environmental Sustainability

We will be one of London's most sustainable universities, embedding environmental sustainability in all aspects of our operations and empowering our community through research, education, and partnerships to mitigate climate and biodiversity crises, and reduce our environmental footprint. We will empower our students, colleagues, and partners to be environmental game-changers, drawing on our creative strengths and leveraging the decarbonisation of our estate.

People, Culture, and Inclusion

We will foster a vibrant, diverse, and inclusive community where everyone feels empowered and valued. We will inspire everyone to reach their potential and have a positive impact on both local and global communities.





HOW TO APPLY

OUR APPLICATION PROCESS

Our current vacancies are listed on our jobs page.

To submit an application for this vacancy, you must follow the online application process for the role on our jobs page jobs.royalholloway.ac.uk.

You'll be asked to register and set up an account on the site and can complete the application in stages. As part of the application process, you will be asked to submit a comprehensive CV and complete supporting statements based on key criteria that are designed to provide you with an opportunity to demonstrate how your qualifications, experience and training are relevant to the role. You will also be asked to include the names and addresses of three referees, one of which must be your current manager. Referees will not be approached until the final stages and not without prior permission from candidates.

If you are unable to apply online, please email your application to recruitment@rhul.ac.uk.

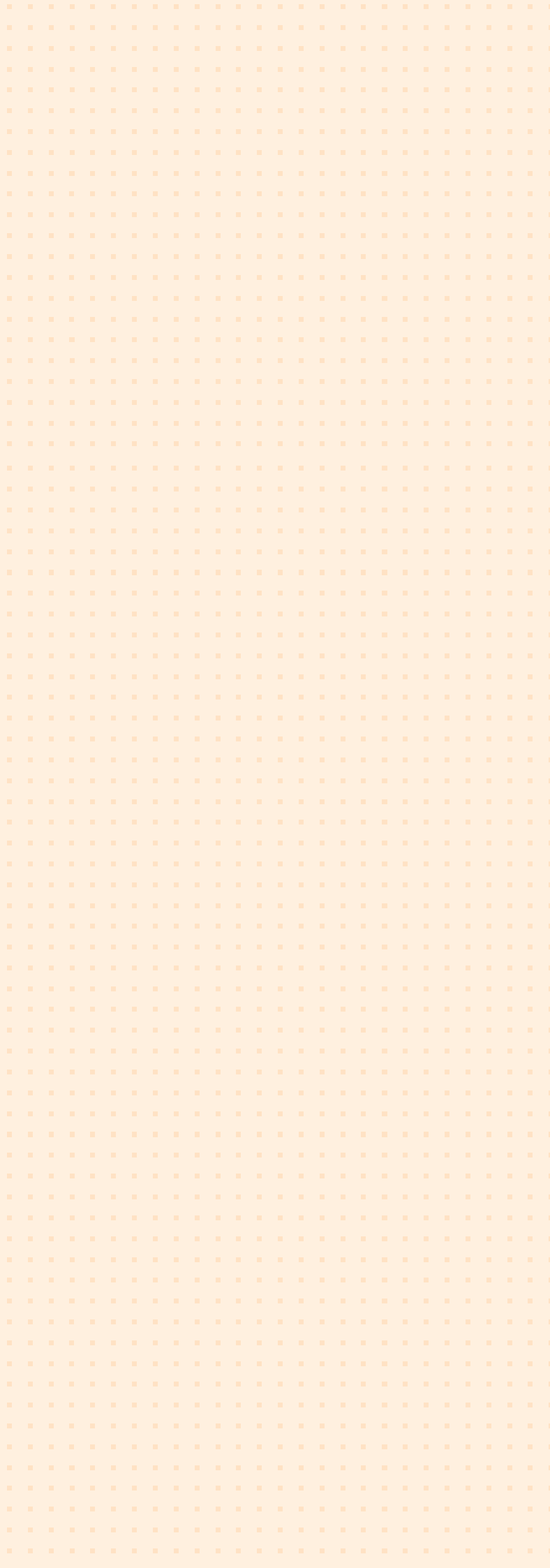
How it works

- **Application submission**
After submitting your online application, it will be reviewed once the vacancy has closed.
- **Shortlisting**
A selection panel reviews all applications against the job description and person specification. The recruitment team will update your application status, and you will be notified by email of the outcome.
- **Initial conversations (where applicable)**
Some roles may include a brief screening call or informal discussion to explore your experience and interest in the role before formal interviews.
- **Interviews and assessment**
Candidates progressing to the next stage will be invited to a panel interview. This may be accompanied by a presentation, task, or other form of assessment depending on the role requirements. These typically take place at our Egham campus or online.
- **Final decisions and references**
Once all interviews are complete, the panel will make a final decision. References will only be contacted at the final stage and never without your prior permission.
- **Offer**
If you are successful, the recruitment team will contact you with a formal offer and next steps.





ROYALHOLLOWAY.AC.UK



Royal Holloway,
University of London
Egham, Surrey
TW20 0EX
01784 434455
royalholloway.ac.uk

